

BONIELLO'S ACRES P.U.D. PHASE TWO

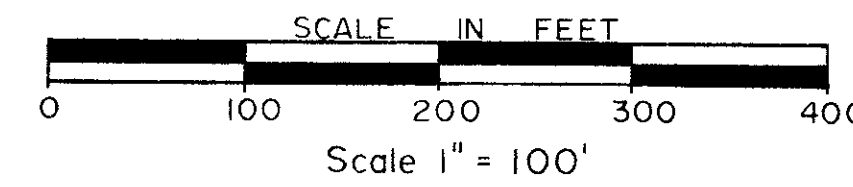
72

BEING A SUBDIVISION OF A PORTION OF THE SOUTHWEST ONE-QUARTER
OF SECTION 34, TOWNSHIP 46 SOUTH, RANGE 42 EAST

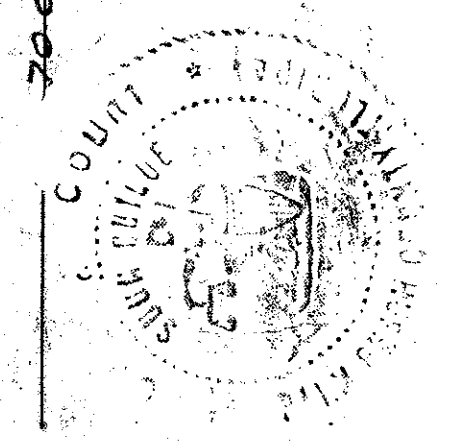
PALM BEACH COUNTY, FLORIDA

SHEET 2 of 2
APRIL 1978

WILLIAMS, HATFIELD & STONER, INC. CIVIL ENGINEERS · LAND SURVEYORS FT LAUDERDALE, FLORIDA



April 3:05 P
71+72
shirreffs

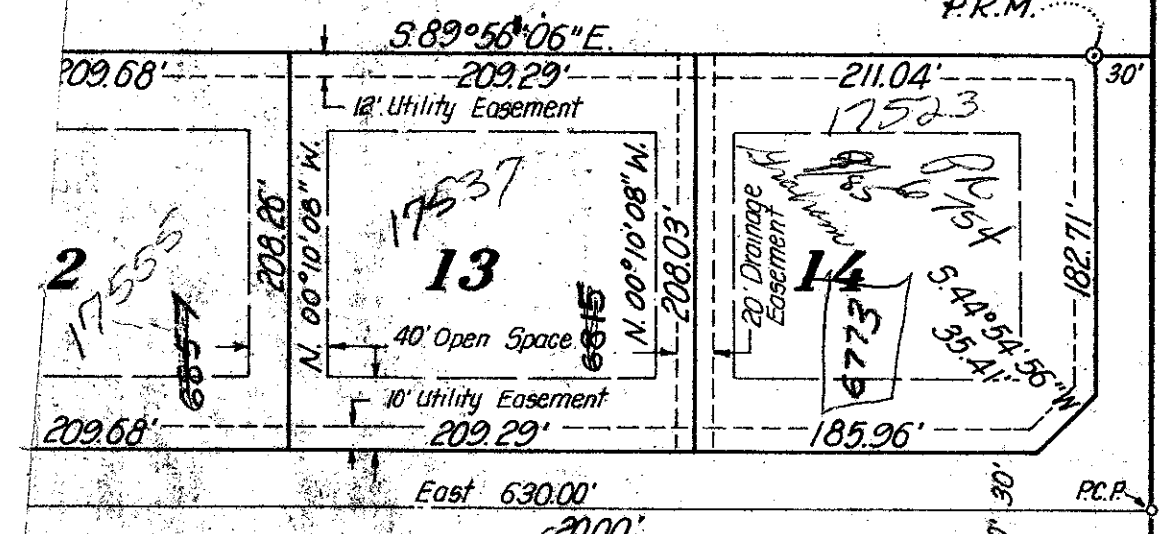


ACREAGE

North Line of S.W. 1/4 of Section 34-46-42

S.89°56'06"E. 660.00'

CANAL LWDD L-39



ACREAGE

West Line of the East 660' of the S.W. 1/4 of Section 34-46

25' Buffer Easement
12' Utility Easement

PR 9908
Howell
18423

PR 9908
18423

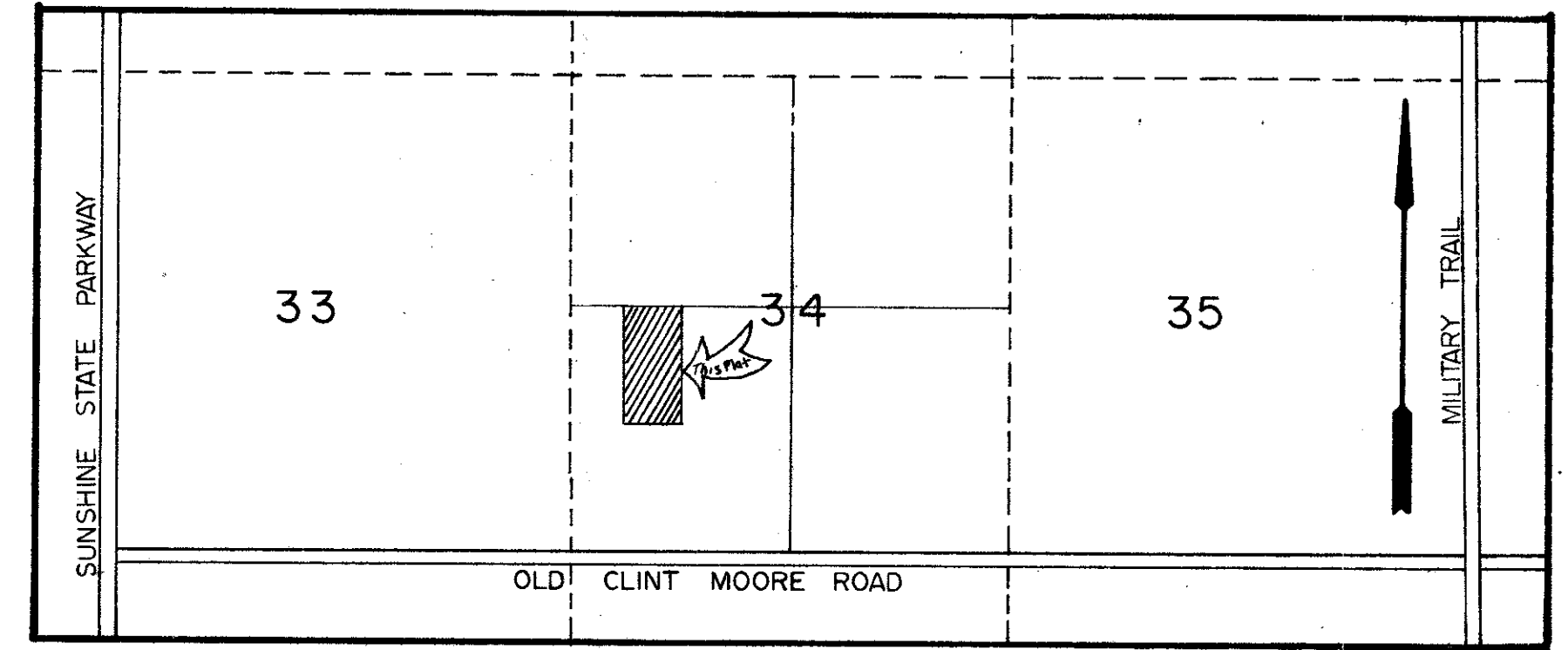
PR 9908
18423

PR 9908
18423

PR 9908
18423

BONIELLO ACRES P.U.D.
(PB 33, Pg. 166 & 167)

South Line of Section 34-46-42



LOCATION SKETCH

FLOOD ZONE 'B'

ACREAGE

AREA TABULATION	
LOT NUMBER	ACRES
1	1.0010
2	1.0010
3	1.2705
4	1.0010
5	1.0010
6	1.0055
7	1.0357
8	1.1045
9	1.0825
10	1.1373
11	1.1373
12	1.0031
13	1.0001
14	1.0000

FS2-30K
F2-B
34/46/42
inspect 9
RE/pud

Total Acreage of Project 20.745 ac.
Total Number of Dwelling Units 14
Gross Density of Project 0.67 / Ac.
Percentage of Project in Residential Use 100%, Building Coverage 5%
Percentage of Project in Commercial Use 0%, Building Coverage 0%
Percentage of Project in Streets and Uncovered Parking 8%
Percentage of Project in Open Space (excluding golf course, uncovered parking, driveways, other impervious surfaces and water bodies.) 35%
Percentage of Project in School 0%
Churches 0%
Government Services 0%
Percentage of Project in Hospital and Convalescent Use 0%
Golf Course 0 Ac.
Uncovered Parking Area 0 Ac.
Water Bodies 1.6 Ac.
Recreation Areas 0 Ac.
Natural Areas 0 Ac.

o P.R.M. Indicates Permanent Reference Marker.
o P.C.P. Indicates Permanent Control Point.
Bearings shown hereon based on N. 89°56'06"W. along the North Line of Southwest 1/4 of Section 34, Township 46, Range 42

This instrument was prepared by Eugene W. Stoner, P.L.S., Williams, Hatfield & Stoner, 2312 Wilton Dr. Ft. Lauderdale, Florida.

1000-083

Boniello's Acres P.U.D. Phase Two - P.U.D.